

Heeho

Guangzhou Heeho Doors Company Limited

HEEHO Galvanized steel roller shutter doors

- HEEHO manufactures strong, versatile and adaptable doors that are built to withstand the toughest conditions. Our roller shutter doors are custom made to suit the requirements of your property.
- Our standard door curtain is manufactured from 22swg galvanized steel lath which is suitable for the majority of commercial applications, as well as offering a high security alternative for backyards.
- Galvanized steel roller shutter doors can be used for a wide variety of applications. Our products are widely used for commercial shops, shopping malls, bank, hotel, clubs, industrial buildings, factory, warehouse, residential house, garage, and others.



▲ HH-GM82 / HH-GM110



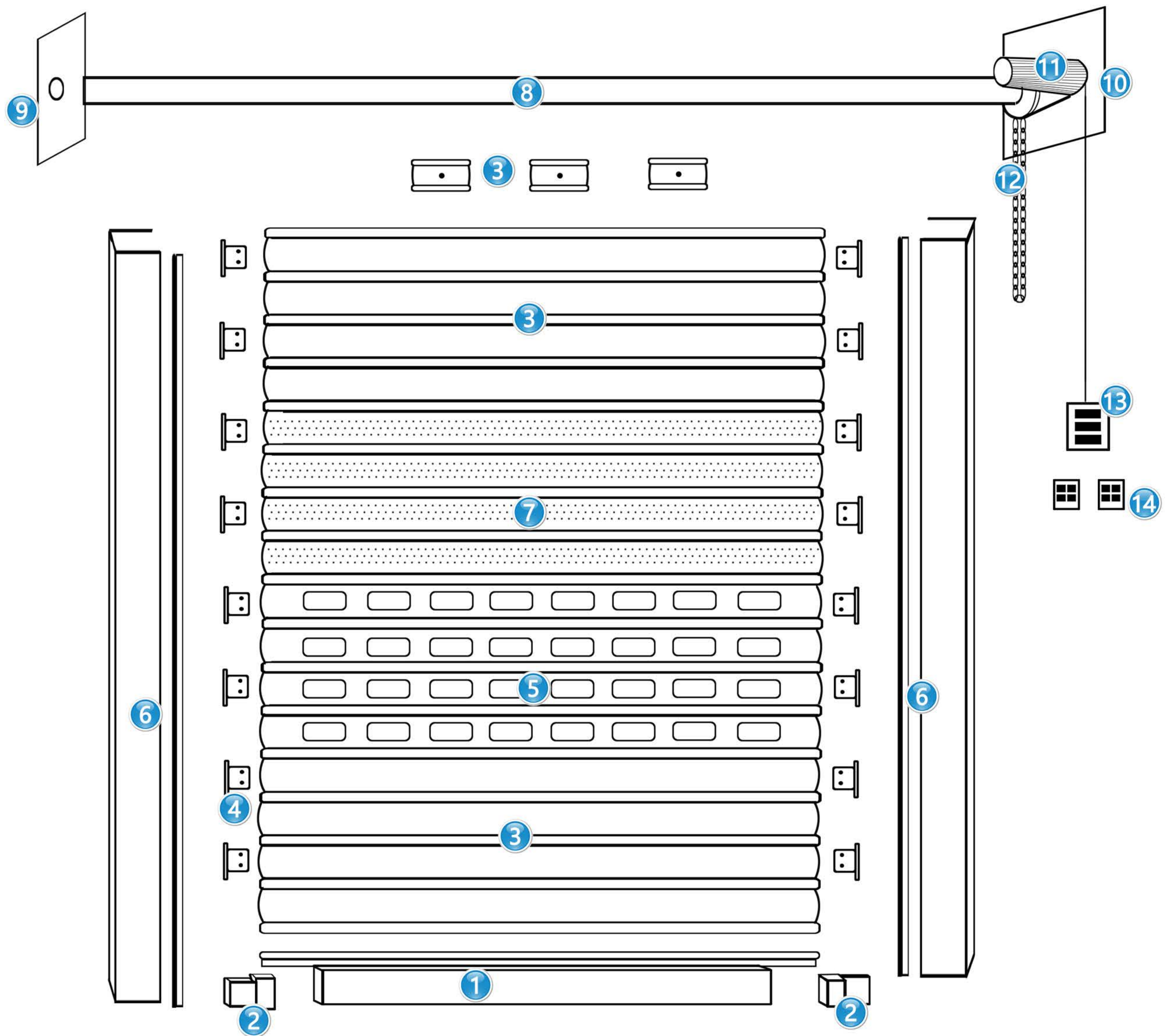
▲ HH-GP82 / HH-GP110



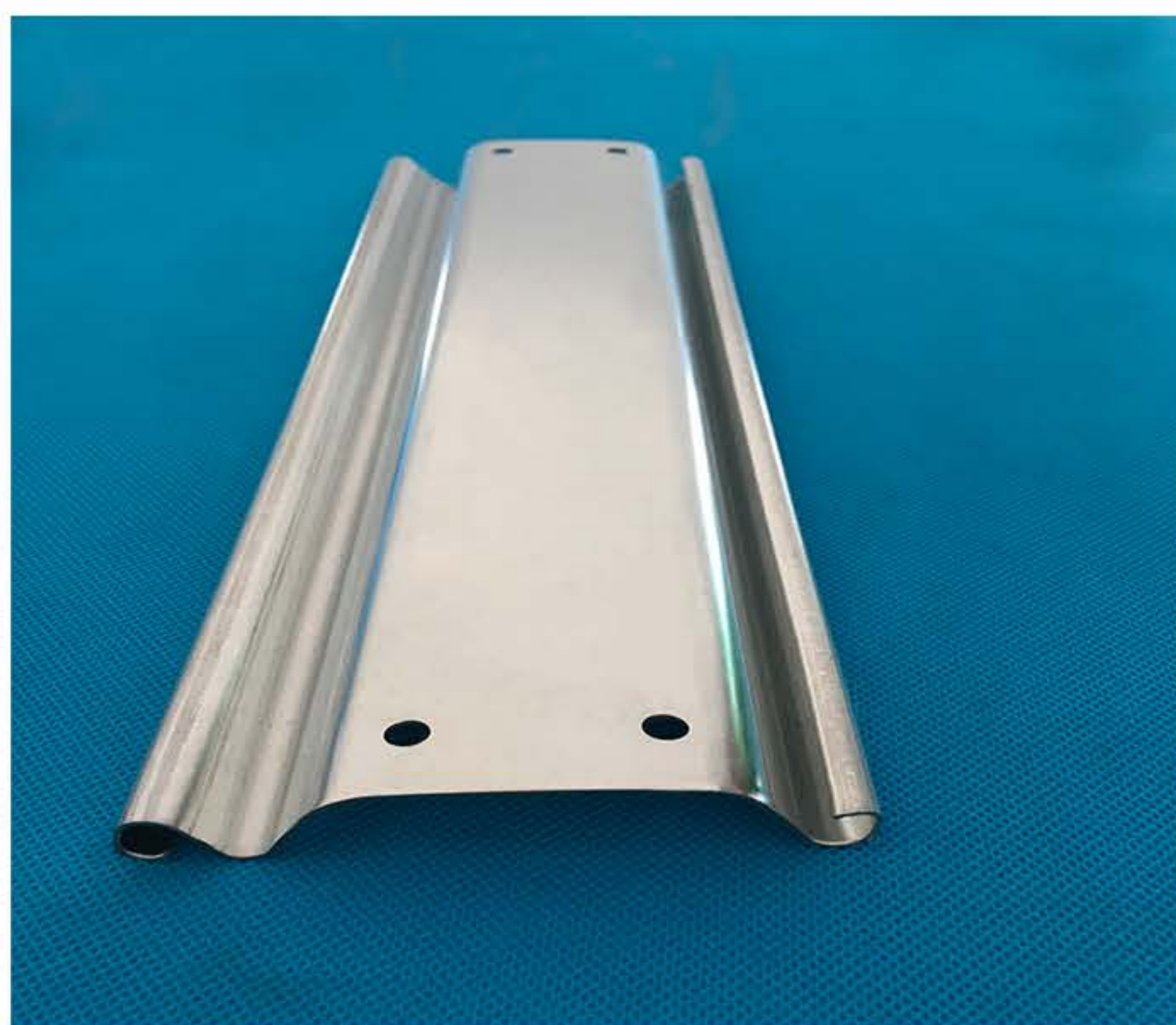
Benefits:

HH-GS82 / HH-GS110

- cost-effective. Galvanizing is lower in first cost than many other commonly specified protective coatings for steel.
- Less maintenance/Lowest long term cost. Galvanizing is almost invariably cheapest in the long term (because it lasts longer and needs less maintenance).
- Long life. The life expectancy of galvanized coatings on typical structural members is far in excess of 50 years in most rural environment.
- Complete protection. Every part of a galvanized article is protected, even recesses, sharp corners and inaccessible areas.
- Faster erection time. As galvanized steel members are received they are ready for use. When assembly of the structure is complete, it is immediately ready for use, or for the next construction stage.
- Automatic protection for damaged areas. Galvanized coatings corrode preferentially to steel, providing cathodic or sacrificial protection to small areas of steel exposed through damage.
- Reliability. Galvanizing is carried out to Australian /New Zealand Standard 4680, and standard, minimum coating thicknesses are applied.
- Coating life and performance are reliable and predictable.



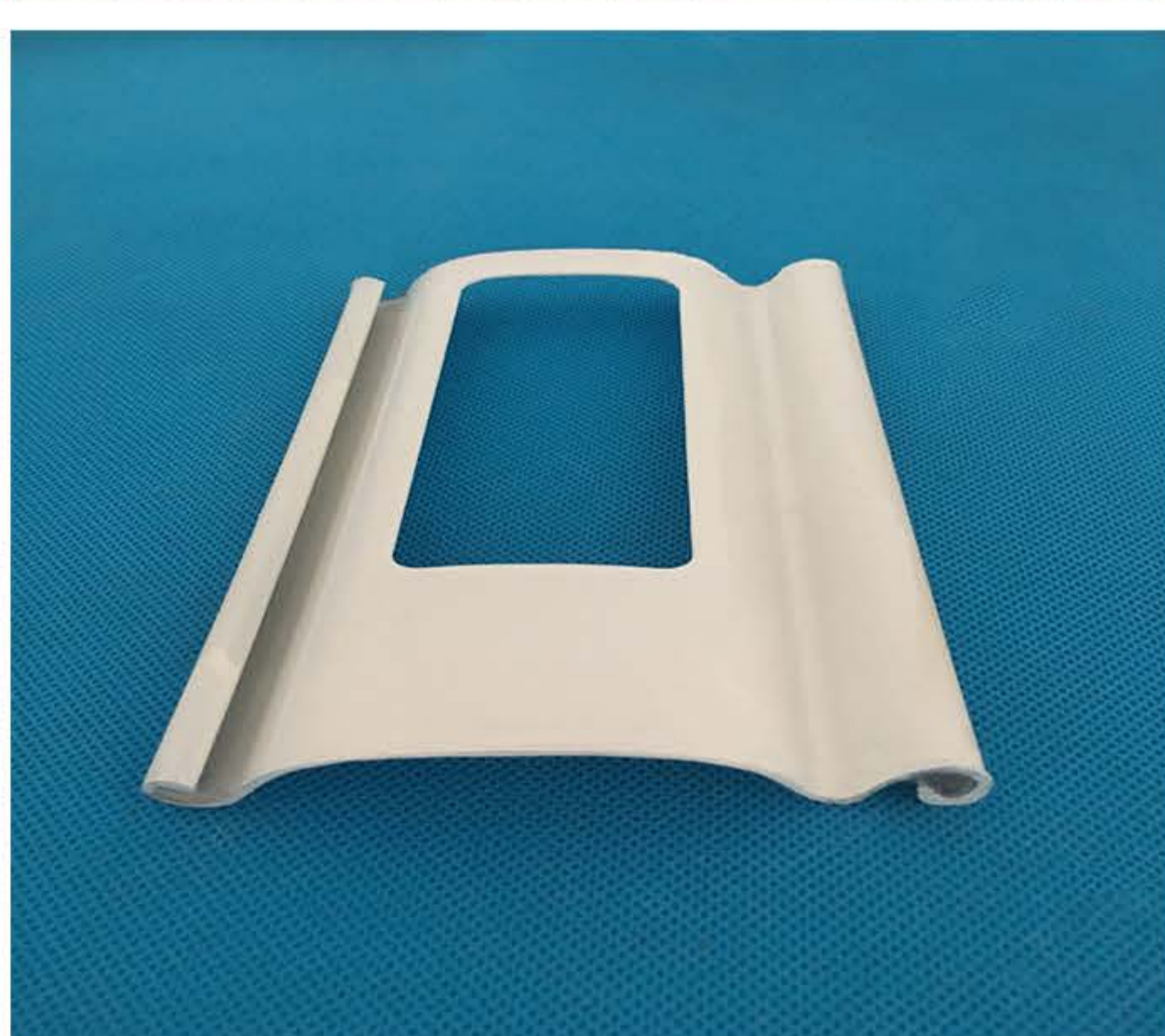
- | | |
|--|------------------------|
| ① Galvanized steel bottom rail | ⑩ Right side plate |
| ② Plastic insert | ⑪ Roller shutter motor |
| ③ Galvanized steel slat | ⑫ Manual hoist chain |
| ④ Steel end clip | ⑬ Switch button |
| ⑤ Galvanized steel punched slat | ⑭ Remote control |
| ⑥ Galvanized steel guide rail | |
| ⑦ Galvanized steel micro-perforated slat | |
| ⑧ Shaft(roller durm) | |
| ⑨ Left side plate | |



- HH-GS82
- Material:Galvanized steel
- Width:82mm
- Thickness:0.6mm,0.8mm,1.0mm.1.2mm
- Color:Original of galvanized color, Other colors can be customized.



- HH-GM82
- Material:Galvanized steel
- Width:82mm
- Hole diameter: 3mm
- Thickness:0.6mm,0.8mm,1.0mm
- Color:Original of galvanized color, Other colors can be customized.



- HH-GP82
- Material:Galvanized steel
- Width:82mm
- Punched size:38mm*100mm
- Thickness:0.6mm,0.8mm,1.0mm
- Color:Original of galvanized color, Other colors can be customized.



- HH-GS110
- Material:Galvanized steel
- Width:110mm
- Thickness:0.8mm,1.0mm.1.2mm
- Color:Original of galvanized color, Other colors can be customized.



- HH-GM110
- Material:Galvanized steel
- Width:110mm
- Hole diameter: 3mm
- Thickness:0.8mm,1.0mm,1.2mm
- Color:Original of galvanized color, Other colors can be customized.



Heeho

Guangzhou Heeho Doors Company Limited

Tel: +86-20-39004566

E-mail: info@heehorollershutter.com

Website: www.heehorollershutter.com

Add: No.C112-C116 Tainan Road, NanSha District, Guangzhou, China